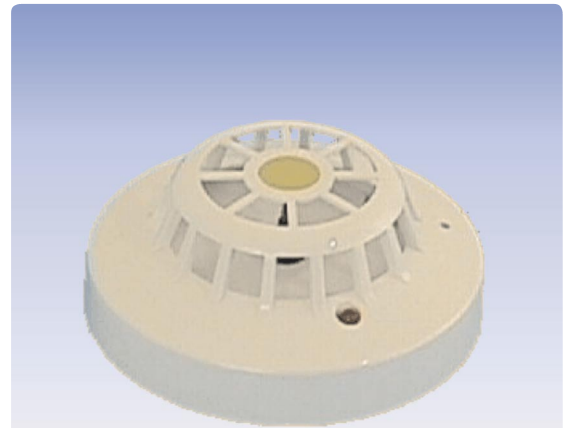


Thermal Detector

AW-55000-420

- **ADM loop technology with Apollo/Discovery protocol**
- **For use as maximum heat or rate-of-rise heat detector**
- **Alarm temperature 55°C**
- **Optional connection of remote indicator**
- **Sealed electronics**



Description

The addressable Thermal Detector AW-55000-420 is based on the heat principle and was developed for the indoor temperature supervision in a wide range of fire detection applications.

The detector is assigned to class A2S and A2R and can be used up to a room height of 6m. Depending on the parameter setup in the fire detection control panel, the detector can operate either as maximum heat detector with an alarm temperature of 55°C, or as rate-of-rise heat detector with a maximum temperature of 55°C.

The proven ADM loop technology with Apollo/Discovery

protocol establishes a permanent communication between the fire detection control panel and the detector. That ensures a periodical function testing of the detector. Fires are safely detected in the control panel by continuously analysing the measured values.

The activated condition of the detector is indicated by a red LED. The detector address is selected by means of a code card in the detector base. Therefore the detector can be changed without additional tools.

The detector can be attached to various bases and it can be protected against theft.

Specifications

Operating voltage	Supply through loop voltage
Current consumption	max. 250µA (quiescent)
Ambient temperature	-20°C to +70°C
Relative humidity	0 – 95% (no condensation)
Dimensions ø x H	100 x 42 (mm)
Colour	white
Weight	105g
Approval	VdS G294029
Order number	242023
Order name	Thermal Detector/Anal./XP95/Apo AW-55000-420

